

# Printgroove JT Web 5

## Category



Web-to-Print

## Characteristics

- Online job submission
- Online payment
- Online status tracking
- Photo book creation
- Hosted





# JOB-TICKET BASED WEB SUBMISSION AROUND THE CLOCK

**As a sophisticated Web-to-Print application, Printgroove JT Web 5 enables print service providers, in-house print-shops, public authorities and the educational sector to offer secure, job-ticket based online submission of print jobs. Irrespective of the location, data format or printer hardware, end users can take advantage of this convenient service 24 hours a day, 7 days a week.**

Combining online job submission, online payment and online status tracking in one professional Web-to-Print application, Printgroove JT Web 5 is the perfect tool for any print provider of web printing services running his or her own server environment.

Printgroove JT Web 5 is one of the modules of the comprehensive Printgroove JT Suite 5, in which the Web-to-Print functionality is enriched with Make-Ready and workflow management capabilities.

# KEY FEATURES

## Online job submission

- **Convenient online ordering and preview:** Customers can comfortably upload and preview the job before ordering, then submit their job online and order the desired number of prints.
- **Pre-flighting:** The application checks if files are printable, images provided by the customer have the proper resolution, fonts are embedded and transparencies have been included.
- **Different order workflows:** Customers can choose between the quick 2-step order process and a shopping cart (4 steps), which allows users to combine several products in one order.
- **24/7 Web shop availability:** Print providers can make their services available to their customers around the clock and are no longer limited by shop opening times.

## Online payment

- **Instant online quotation:** The application instantly calculates the price for the print product. Every detail, such as monochrome or colour output, paper size and type, is included in the automatic calculation.
- **Online payment:** Secure payment choices can optionally be made available to customers to pay online without risk.

## Online status tracking

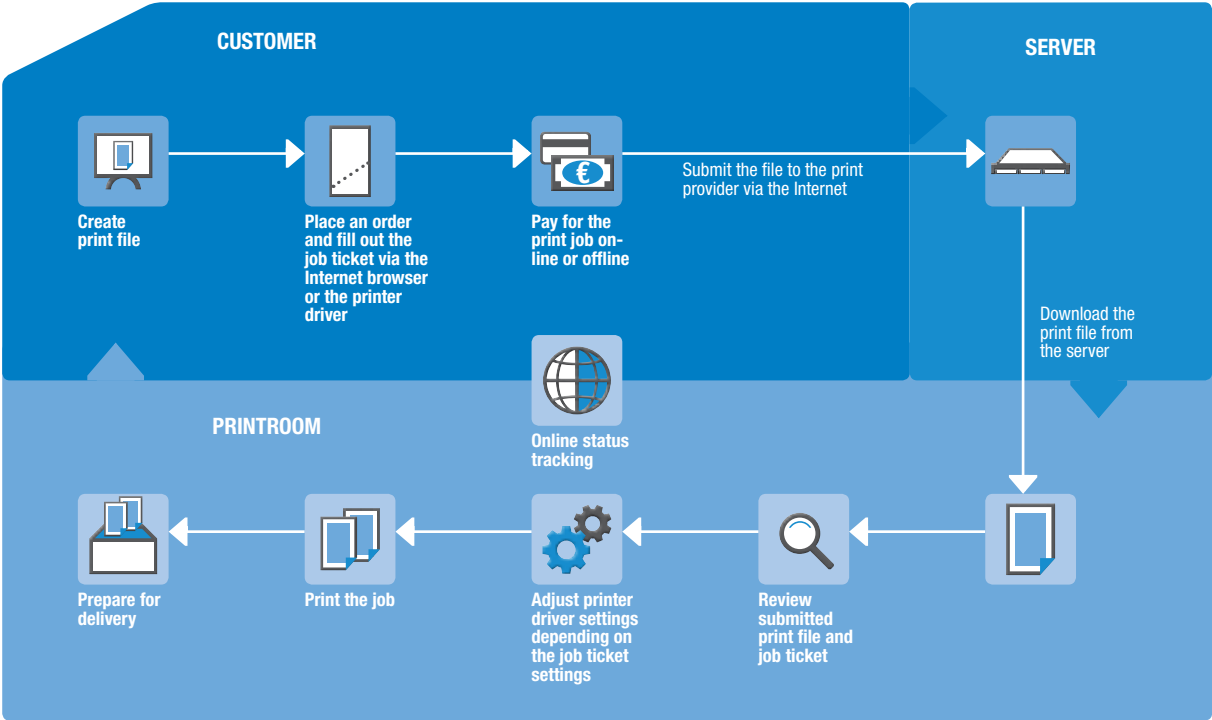
- **Different user roles:** These can be defined as 'manager', 'print operator', 'user plus', 'user', with different user rights assigned to each user role.
- **Dashboard:** The application enables users to check their job status at any time online via the software dashboard.
- **MIS/ERP integration:** Via a CSV file, print data can be exported from the application to MIS and ERP systems.



### Additional Printgroove JT 5 modules

<b>JT Document Converter</b>	Enables uploading of up to 300 different file formats (including .doc, .xls, .ppt, etc.) to the Printgroove JT Web 5 print portal so that customers do not need a specific converter application.
<b>JT Forms</b>	Increases user flexibility for print products with variable content, enabling the simple and CI-compliant creation of business cards, customised brochures, leaflets, etc.
<b>JT Multishop</b>	Allows print providers to create dedicated web shops with individual user interfaces, products and price lists for different user groups.
<b>JT Online Payment Connector</b>	Provides support for numerous payment methods, including all major credit and debit cards, direct banking, and payment via E-wallet (PayPal Connector).
<b>JT Shop Corner</b>	Upgrades Printgroove JT Web 5 to a complete Web shop, enabling print providers to also offer non-print items.
<b>JT Copy Service</b>	Allows customers to enjoy the simplicity of the print portal to place their orders online, but submit their originals separately on paper or data carrier (CD, USB, etc.).

# WORKFLOW



- Colour Management
- Web-to-Print
- Variable Data Printing
- Print Automation
- Make-Ready
- Document Capture & Management
- Security
- Connectivity
- User & Cost Management
- Output Management
- Device Management
- Cloud & Mobile Printing

**KONICA MINOLTA** APPLICATIONS